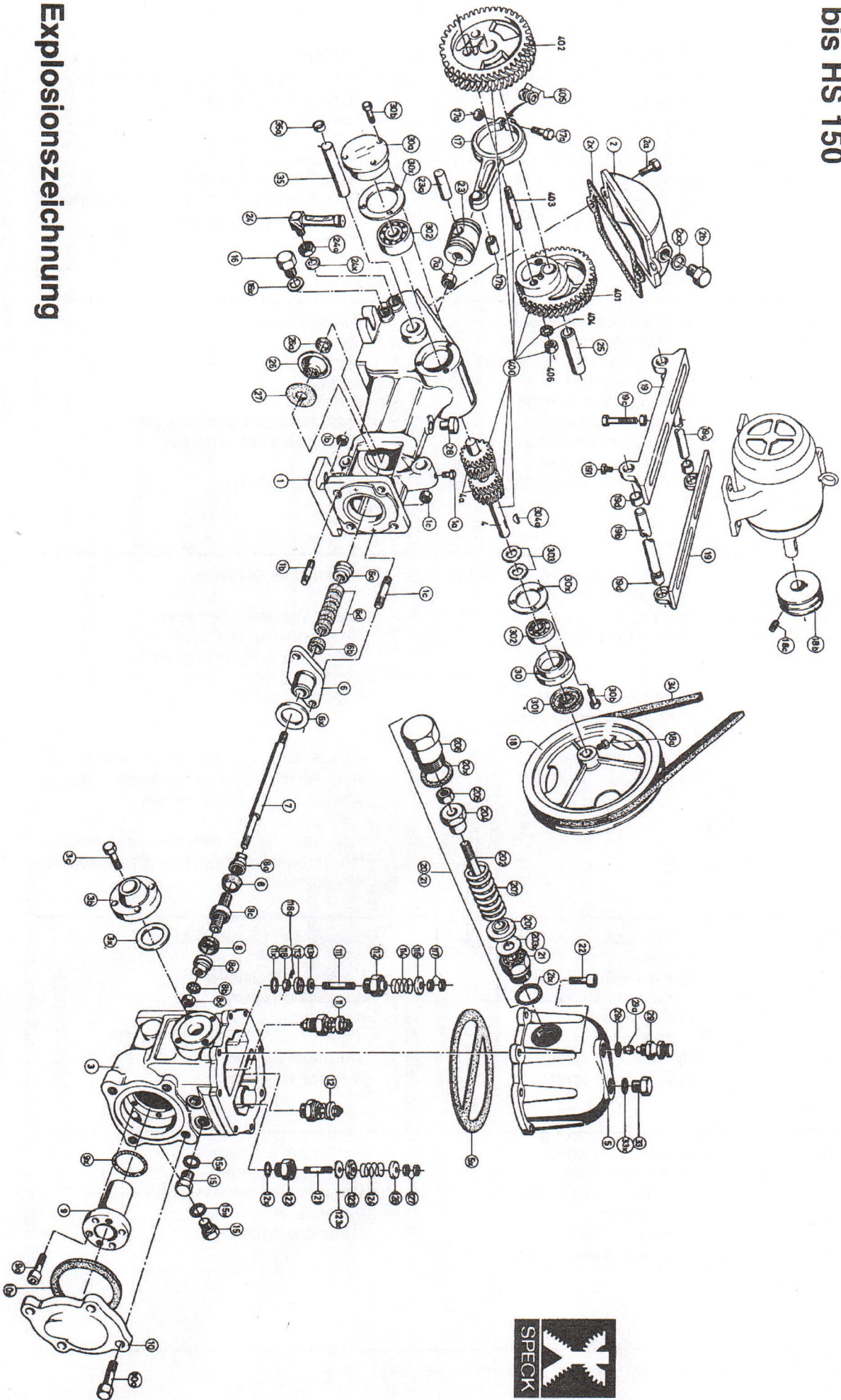


HOCHDRUCKKOLBENPUMPE KESSELSPEISEPUMPE Typen

HS 15
bis HS 150

Bei **ERSATZTEILBESTELLUNG**
Bitte Pumpentype, Pumpennummer, Teile-Bestell-Nr. und evtl. Zylinderdurchmesser
angeben.
Steht die Bestellnummer ohne Kreis, so können die damit bezeichneten Teile nicht
einzelnd geliefert werden, das Getriebe Nr. 400 ist also nicht in Einzelteilen erhältlich.
Alle mit x bezeichneten Teile sind Dichtungen.



Explosionszeichnung

LIST OF SPARE PARTS
HIGH PRESSURE «BÜFFELPUMPE» MODELS HS-15 - HS-150

Item No.	Item	No. of	Item No.	Item	No. of
		Of			Of
1	Crankcase		15	Drain plug	
1a	Hexagon head screw		15x	Seal for item 15	
1b	Studs with nuts	4	16	Oil drain plug	
1c	Studs (with nuts for HS 15 only)	2	16x	Seal for item 16	
2	Crankcase end cover		17a	Hexagon head bolt with nut and washers 405	8
2a	Hexagon head screw		17b	Connecting rod sleeve	
2x	Gasket for item 2		17	Connecting rod complete	
2b	Vent Plug				
2xx	Gasket for 2b				
3	Cylinder and valve box		18	Vee pulley pump	
3b	Counter flange	2	18a	Fixing screw	
3c	Hexagon head screw	8	18b	Vee pulley motor	
3x	Flange gasket	2	18c	Grub screw	
			19	Motor rocker (2 rails) Motor rocker (2 rails), of malleable cast iron (only for HS-15 to HS-50)	
400	Complete gear with pinion and shaft (available only as a complete set)		19a	Pin	
5	Air vacuum chamber without safety valve		19b	Hinge pin	
5x	Air chamber gasket		19c	Tensioning screw Nut	4
6	Stuffing box casing		19d	Insulating sleeve	
6a	Stuffing box nut		191	Hexagon head screw Motor rocker complete Motor rocker complete, of malleable cast iron (only for HS-15 to HS-50)	
6b	Seal ring				
6d	Gland packing				
6x	Stuffing box gasket Stuffing box complete				
7	Piston rod with bronze nut		20/21	Safety valve complete with seat Brass valve plate	
7a	Counter nut at crosshead (steel)		207	Valve spring, stainless steel	
	Piston, compl., without sleeves		21	Valve seat, brass	
8a	Piston nut, (brass)	2	21x	Valve seat gasket, copper-asbestos ring	
8b	Toothed washer			Cap nut, brass	
8c	Piston body			Gasket for cap nut, copper-asbestos ring	
9	Cylinder liner, chrome-plated		22	Air chamber fixing screw (set of 8)	8
9a	Cylinder fixing screw HS-15 to HS-40 HS-50 to HS-150	4			
9x	Cylinder gasket				
10	Cylinder cover				
10a	Cylinder cover fixing screw, HS-15 to HS-40 HS-50 to HS-150	4			
10x	Gasket for cylinder cover item 10	6			
			23	Crosshead	
11	Suction valve complete	2	23a	Crosshead pin	
111	Valve stem	2	24	Oil level plug	
112	Valve body	2	24x	Seal for item 24	
113	Valve disc (brass)	2	25	Main bearing sleeve	
113x	Rubber valve disc	2	26	Oil splash cap	
114	Valve Spring	2	27	Drip shield (rubber)	
116	Spring pan	2	28	Oil filling plug	
117/118	Fixing screws (bronze)	4/2	29	Snifting valve	
11x	Copper-asbestos ring	2	29a	Neoprene cap for snifting valve	
			29x	Seal for item 29	
12	Discharge valve compl.	2	30	Bearing cover open, without searing	
121	Valve stem	2	301	Sealring for item 30	
122	Valve body	2	30a	Bearing cover closed	
123	Valve disc (brass)	2	30b	Hexagon head screw	
123x	Rubber valve disc	2	30x	Gasket for bearing cover	2
124	Valve Spring	2	302	Ball bearing	2
126	Spring pan	2	303	Spacer, brass	2
127	Fixing screws (bronze)	4	304a	Key	3
12x	Copper-asbestos ring	2	33	Filling plug	
			33x	Seal for item 33	
			34	Vee belt	
			35	Main gear shaft	
			35a	Cover for item 35	2
			35b	Hexagon screw for 35a	6
			35x	Gasket for 35a	2
				Complete set of gaskets	

All parts marked with an X are seals

The gear No. 400 can only be supplied as a complete unit

Parts marked with a number not circled cannot be supplied individually